

HIGHLIGHTS OF PRESCRIBING INFORMATION

These highlights do not include all the information needed to use VARUBI safely and effectively. See full prescribing information for VARUBI.

VARUBI® (rolapitant) tablets, for oral use

VARUBI® (rolapitant) injectable emulsion, for intravenous use

Initial U.S. Approval: 2015

RECENT MAJOR CHANGES

Dosage and Administration (2)	10/2017
Contraindications (4)	10/2017
Warnings and Precautions (5.1)	10/2017

INDICATIONS AND USAGE

VARUBI is a substance P/neurokinin 1 (NK1) receptor antagonist indicated in combination with other antiemetic agents in adults for the prevention of delayed nausea and vomiting associated with initial and repeat courses of emetogenic cancer chemotherapy, including, but not limited to, highly emetogenic chemotherapy. (1)

DOSAGE AND ADMINISTRATION

- Administer in combination with dexamethasone and a 5-HT₃ receptor antagonist; see full prescribing information for dosing information. (2)
- No dosage adjustment for dexamethasone is required. (2)
- Administer VARUBI within 2 hours prior to the initiation of chemotherapy on Day 1. (2)
- Tablets: The recommended dosage is 180 mg as a single dose. (2)
- Injectable emulsion: The recommended dosage is 166.5 mg administered as an intravenous infusion over 30 minutes. (2)

DOSAGE FORMS AND STRENGTHS

- Tablets: 90 mg of rolapitant (3)
- Injectable emulsion: 166.5 mg/92.5 mL (1.8 mg/mL) of rolapitant in a single-dose vial (3)

CONTRAINDICATIONS

CYP2D6 substrates with a narrow therapeutic index (e.g., thioridazine and pimozide) (4, 5.1, 7.1)

WARNINGS AND PRECAUTIONS

CYP2D6 Substrates: Rolapitant is a moderate inhibitor of CYP2D6 and significantly increases the plasma concentrations of CYP2D6 substrates for at least 28 days following single dose administration of VARUBI. Before starting VARUBI, consider if patients require:

- thioridazine or pimozide; if so, use an alternative antiemetic to VARUBI or an alternative to thioridazine or pimozide that is not metabolized by CYP2D6.
- other CYP2D6 substrates; if so, consult the prescribing information for the CYP2D6 substrate for additional information about interactions with CYP2D6 inhibitors. (4, 5.1, 7.1)

ADVERSE REACTIONS

Most common adverse reactions (≥5%) are:

- Cisplatin Based Highly Emetogenic Chemotherapy: neutropenia and hiccups (6.1)
- Moderately Emetogenic Chemotherapy and Combinations of Anthracycline and Cyclophosphamide: decreased appetite, neutropenia and dizziness (6.1)

To report SUSPECTED ADVERSE REACTIONS, contact TESARO at 1-844-4-tesaro or FDA at 1-800-FDA-1088 or www.fda.gov/medwatch.

DRUG INTERACTIONS

- Strong CYP3A4 Inducers (e.g., rifampin):** significantly reduced plasma concentrations of rolapitant can decrease the efficacy of VARUBI; avoid use of VARUBI in patients who require chronic administration of such drugs. (7.2)
- BCRP and P-gp Substrates with a Narrow Therapeutic Index:** Oral VARUBI is an inhibitor of BCRP and P-gp and can increase plasma concentrations of the concomitant drug and potential for adverse reactions. See full prescribing information for specific examples. (7.3, 7.4)
- Warfarin:** Monitor for increased INR or prothrombin time; adjust the dose of warfarin as needed. (7.5)

See 17 for PATIENT COUNSELING INFORMATION and FDA-approved patient labeling.

Revised: 10/2017

FULL PRESCRIBING INFORMATION: CONTENTS*

1 INDICATIONS AND USAGE

2 DOSAGE AND ADMINISTRATION

2.1 Dosage

2.2 Instructions for Administration of VARUBI Injectable Emulsion

3 DOSAGE FORMS AND STRENGTHS

4 CONTRAINDICATIONS

5 WARNINGS AND PRECAUTIONS

5.1 Interaction with CYP2D6 Substrates

6 ADVERSE REACTIONS

6.1 Clinical Trials Experience

7 DRUG INTERACTIONS

7.1 CYP2D6 Substrates

7.2 Strong CYP3A4 Inducers

7.3 BCRP Substrates with a Narrow Therapeutic Index

7.4 P-gp Substrates with a Narrow Therapeutic Index

7.5 Warfarin

7.6 CYP3A4 Substrates

8 USE IN SPECIFIC POPULATIONS

8.1 Pregnancy

8.2 Lactation

8.3 Females and Males of Reproductive Potential

8.4 Pediatric Use

8.5 Geriatric Use

8.6 Hepatic Impairment

10 OVERDOSAGE

11 DESCRIPTION

12 CLINICAL PHARMACOLOGY

12.1 Mechanism of Action

12.2 Pharmacodynamics

12.3 Pharmacokinetics

13 NONCLINICAL TOXICOLOGY

13.1 Carcinogenesis, Mutagenesis, Impairment of Fertility

14 CLINICAL STUDIES

16 HOW SUPPLIED/STORAGE AND HANDLING

17 PATIENT COUNSELING INFORMATION

* Sections or subsections omitted from the full prescribing information are not listed.

FULL PRESCRIBING INFORMATION

1 INDICATIONS AND USAGE

VARUBI® is indicated in combination with other antiemetic agents in adults for the prevention of delayed nausea and vomiting associated with initial and repeat courses of emetogenic cancer chemotherapy, including, but not limited to, highly emetogenic chemotherapy.

2 DOSAGE AND ADMINISTRATION

2.1 Dosage

The recommended dosage of VARUBI tablets and VARUBI injectable emulsion in adults in combination with a 5-HT₃ receptor antagonist and dexamethasone for the prevention of nausea and vomiting with emetogenic cancer chemotherapy is shown in [Table 1](#). There is no drug interaction between rolapitant and dexamethasone, so no dosage adjustment for dexamethasone is required. Administer a dexamethasone dose of 20 mg on Day 1 [see *Clinical Pharmacology* ([12.3](#))].

Administer VARUBI prior to the initiation of each chemotherapy cycle, but at no less than 2 week intervals.

Administer VARUBI tablets without regards to meals.

Table 1: Recommended Dosing Regimen of VARUBI Tablets or VARUBI Injectable Emulsion				
	Day 1	Day 2	Day 3	Day 4
Prevention of Nausea and Vomiting Associated with Cisplatin-Based Highly Emetogenic Cancer Chemotherapy				
VARUBI	Administer orally or intravenously within 2 hours prior to initiation of chemotherapy <i>Oral:</i> 180 mg as a single dose <i>Injectable emulsion:</i> Infuse 166.5 mg over 30 minutes.	None		
Dexamethasone	20 mg; 30 min prior to initiation of chemotherapy	8 mg twice daily	8 mg twice daily	8 mg twice daily
5-HT ₃ receptor antagonist	See the prescribing information for the co-administered 5-HT ₃ receptor antagonist for appropriate dosing information.	None		

Table 1: Recommended Dosing Regimen of VARUBI Tablets or VARUBI Injectable Emulsion				
	Day 1	Day 2	Day 3	Day 4
Prevention of Nausea and Vomiting Associated with Moderately Emetogenic Cancer Chemotherapy and Combinations of Anthracycline and Cyclophosphamide				
VARUBI	Administer orally or intravenously within 2 hours prior to initiation of chemotherapy <i>Oral:</i> 180 mg as a single dose <i>Injectable emulsion:</i> Infuse 166.5 mg over 30 minutes.	None		
Dexamethasone	20 mg; 30 min prior to initiation of chemotherapy	None		
5-HT ₃ receptor antagonist	See the prescribing information for the co-administered 5-HT ₃ receptor antagonist for appropriate dosing information.	See the prescribing information for the co-administered 5-HT ₃ receptor antagonist for appropriate dosing information.		

2.2 Instructions for Administration of VARUBI Injectable Emulsion

- VARUBI injectable emulsion is supplied as a single-dose vial for intravenous administration. The emulsion is homogeneous (no shaking required) and translucent white in appearance.
- Inspect VARUBI injectable emulsion for particulate matter and discoloration prior to administration; discard if present. Do not use if contamination is suspected.
- Use and maintain aseptic technique while handling VARUBI injectable emulsion.
- Administer the dose by inserting a vented intravenous set through the septum of the vial. Once the stopper is punctured, use immediately. *Do not dilute VARUBI injectable emulsion.*
- Infuse 92.5 mL from the vial over 30 minutes.
- VARUBI injectable emulsion is compatible with the following other intravenous fluids through a Y-site connection:
 - Sodium Chloride 0.9% Injection, USP
 - Dextrose 5% Injection, USP
 - Dextrose 5% in Lactated Ringer's Injection, USP
 - Lactated Ringer's Injection, USP

3 DOSAGE FORMS AND STRENGTHS

VARUBI tablets: 90 mg rolapitant; film-coated capsule shaped, blue tablets, debossed with T0101 on one side and 100 on the other side.

VARUBI injectable emulsion: 166.5 mg/92.5 mL (1.8 mg/mL) rolapitant as a sterile, translucent white homogeneous liquid with some opalescence in a single-dose vial.

4 CONTRAINDICATIONS

VARUBI is contraindicated in patients taking CYP2D6 substrates with a narrow therapeutic index, such as thioridazine and pimozide. VARUBI can significantly increase the plasma concentrations of thioridazine and pimozide, which may result in QT prolongation and Torsades de Pointes [see *Warnings and Precautions (5.1)*].

5 WARNINGS AND PRECAUTIONS

5.1 Interaction with CYP2D6 Substrates

Rolapitant is a moderate inhibitor of CYP2D6. Exposure to dextromethorphan, a CYP2D6 substrate, following a single dose of rolapitant increased about 3-fold on Days 8 and Day 22. The inhibition of CYP2D6 persisted on Day 28 with a 2.3-fold increase in dextromethorphan concentrations, the last time point measured. The inhibitory effect of rolapitant on CYP2D6 is expected to persist beyond 28 days for an unknown duration following administration of VARUBI [see *Drug Interactions (7.1)*, *Clinical Pharmacology (12.3)*].

Narrow Therapeutic Index Drugs (Thioridazine and Pimozide)

VARUBI is contraindicated in patients taking CYP2D6 substrates with a narrow therapeutic index such as thioridazine and pimozide. Increased plasma concentrations of thioridazine and pimozide are associated with serious and/or life-threatening events of QT prolongation and Torsades de Pointes [see *Contraindications (4)*].

Before starting treatment with VARUBI, consider whether patients require treatment with thioridazine or pimozide. If patients require these drugs, use an alternative antiemetic to VARUBI or an alternative to thioridazine or pimozide that is not metabolized by CYP2D6.

Other Drugs

VARUBI can also increase plasma concentrations of other CYP2D6 substrates for at least 28 days following administration of VARUBI and may result in adverse reactions.

Before starting treatment with VARUBI, consult the prescribing information for CYP2D6 substrates to obtain additional information about interactions with CYP2D6 inhibitors.

6 ADVERSE REACTIONS

6.1 Clinical Trials Experience

Because clinical trials are conducted under widely varying conditions, adverse reaction rates observed in the clinical trials of a drug cannot be directly compared to rates in the clinical trials of another drug and may not reflect the rates observed in clinical practice.

VARUBI Tablets

In 4 controlled clinical trials in patients receiving emetogenic cancer chemotherapy, VARUBI tablets were given in combination with a 5-HT₃ receptor antagonist and dexamethasone. On Day 1 of Cycle 1 of chemotherapy, 1567 patients were treated with VARUBI tablets and 1198 of these patients continued into the optional multiple cycle extension for up to 6 cycles of chemotherapy. The median number of cycles administered 180 mg of VARUBI tablets was four. VARUBI tablets 180 mg were administered to 1294 patients.

In Cycle 1 adverse reactions were reported in approximately 7% of patients treated with VARUBI tablets compared with approximately 6% of patients treated with control therapy. The most common adverse reactions reported with an incidence of $\geq 3\%$ and greater than control are listed in [Table 2](#) and [Table 3](#).

Table 2: Most Common Adverse Reactions in Patients Receiving Cisplatin-Based Highly Emetogenic Chemotherapy (Cycle 1)*

	VARUBI Regimen (VARUBI tablets, Dexamethasone, and 5-HT₃ Receptor Antagonist) N = 624	Control (Placebo, Dexamethasone, and 5-HT₃ Receptor Antagonist) N = 627
Neutropenia	9%	8%
Hiccups	5%	4%
Abdominal Pain	3%	2%

*all reactions occurring at $\geq 3\%$ in the VARUBI group and for which the rate for VARUBI exceeds the rate for control

Table 3: Most Common Adverse Reactions in Patients Receiving Moderately Emetogenic Chemotherapy and Combinations of Anthracycline and Cyclophosphamide (Cycle 1)*

	VARUBI Regimen (VARUBI tablets, Dexamethasone, and 5-HT₃ Receptor Antagonist) N = 670	Control (Placebo, Dexamethasone, and 5-HT₃ Receptor Antagonist) N = 674
Decreased appetite	9%	7%
Neutropenia	7%	6%
Dizziness	6%	4%
Dyspepsia	4%	2%
Urinary tract infection	4%	3%

Table 3: Most Common Adverse Reactions in Patients Receiving Moderately Emetogenic Chemotherapy and Combinations of Anthracycline and Cyclophosphamide (Cycle 1)*		
	VARUBI Regimen (VARUBI tablets, Dexamethasone, and 5-HT₃ Receptor Antagonist) N = 670	Control (Placebo, Dexamethasone, and 5-HT₃ Receptor Antagonist) N = 674
Stomatitis	4%	2%
Anemia	3%	2%

*all reactions occurring at $\geq 3\%$ in the VARUBI group and for which the rate for VARUBI exceeds the rate for control.

Adverse reactions in the multiple-cycle extensions of highly and moderately emetogenic chemotherapy studies for up to 6 cycles of chemotherapy were generally similar to that observed in Cycle 1.

VARUBI Injectable Emulsion

In healthy subjects receiving the recommended therapeutic dose of VARUBI injectable emulsion, infusion-related adverse reactions were reported in 2.6% (2/78) of subjects during the infusion and included sensation of warmth, abdominal pain, dizziness and paresthesia.

Since VARUBI injectable emulsion is the same active substance (rolapitant) as VARUBI tablets, adverse reactions associated with VARUBI tablets might also be expected to occur with VARUBI injectable emulsion.

7 DRUG INTERACTIONS

7.1 CYP2D6 Substrates

Rolapitant is a moderate CYP2D6 inhibitor. Exposure to dextromethorphan, CYP2D6 substrate, following a single dose of rolapitant increased about 3-fold on Days 8 and Day 22. The inhibition of CYP2D6 persisted on Day 28 with a 2.3-fold increase in dextromethorphan concentrations, the last time point measured. The inhibitory effect of rolapitant on CYP2D6 is expected to persist beyond 28 days for an unknown duration following administration of VARUBI [see *Clinical Pharmacology (12.3)*].

Narrow Therapeutic Index Drugs (Thioridazine and Pimozide)

VARUBI is contraindicated in patients taking CYP2D6 substrates with a narrow therapeutic index such as thioridazine and pimozide. Increased plasma concentrations of thioridazine and pimozide are associated with serious and/or life-threatening events of QT prolongation and Torsades de Pointes [see *Contraindications (4), Warnings and Precautions (5.1)*].

Before starting treatment with VARUBI, consider whether patients require treatment with thioridazine or pimozide. If patients require these drugs, use an alternative antiemetic to VARUBI or an alternative to thioridazine or pimozide that is not metabolized by CYP2D6.

Other Drugs

VARUBI can also increase plasma concentrations of other CYP2D6 substrates for at least 28 days following administration of VARUBI and may result in adverse reactions.

Before starting treatment with VARUBI consult the prescribing information of CYP2D6 substrates to obtain further information about interactions with CYP2D6 inhibitors.

7.2 Strong CYP3A4 Inducers

Co-administration of VARUBI with strong CYP3A4 inducers (e.g., rifampin) can significantly reduce the plasma concentrations of rolapitant and decrease the efficacy of VARUBI. Avoid the use of VARUBI in patients who require chronic administration of strong CYP3A4 inducers [see *Clinical Pharmacology* (12.3)].

7.3 BCRP Substrates with a Narrow Therapeutic Index

Oral rolapitant is an inhibitor of Breast-Cancer-Resistance Protein (BCRP). Increased plasma concentrations of BCRP substrates (e.g., methotrexate, topotecan, or irinotecan) may result in potential adverse reactions. Monitor for adverse reactions related to the concomitant drug if use of VARUBI tablets cannot be avoided. Use the lowest effective dose of rosuvastatin (see prescribing information for additional information on recommended dosing) [see *Clinical Pharmacology* (12.3)].

7.4 P-gp Substrates with a Narrow Therapeutic Index

Oral rolapitant is an inhibitor of p-glycoprotein (P-gp). Increased plasma concentrations of P-gp substrates (e.g., digoxin) may result in potential adverse reactions. Monitor digoxin concentrations with concomitant use of VARUBI and adjust the dosage as needed to maintain therapeutic concentrations. Monitor for adverse reactions if concomitant use of VARUBI tablets with other P-gp substrates with a narrow therapeutic index cannot be avoided.

7.5 Warfarin

Although co-administration of intravenous VARUBI with warfarin did not substantially increase the systemic exposure to S-warfarin, the active enantiomer, the effects on INR and prothrombin time were not studied. Monitor INR and prothrombin time and adjust the dosage of warfarin, as needed with concomitant use of VARUBI, to maintain the target INR range.

7.6 CYP3A4 Substrates

Rolapitant, given as a single intravenous or oral dose, is not an inhibitor or inducer of CYP3A4 [see *Clinical Pharmacology* (12.3)]. Therefore, no dosage adjustment for dexamethasone (CYP3A4 substrate) is needed when co-administered with VARUBI [see *Dosage and Administration* (2)].

8 USE IN SPECIFIC POPULATIONS

8.1 Pregnancy

Risk Summary

The limited data with VARUBI use in pregnant women are insufficient to inform a drug associated risk of adverse developmental outcomes. In animal reproduction studies, there were no adverse developmental effects observed with oral administration of rolapitant in rats and rabbits during the period of organogenesis at doses up to 1.3 times and 2.9-times, respectively, the maximum recommended human dose (MRHD) [see [Data](#)].

The estimated background risk of major birth defects and miscarriage for the indicated population is unknown. All pregnancies have a background risk of birth defect, loss, or other adverse outcomes. In the U.S. general population, the estimated background risk of major birth defects and miscarriage in clinically recognized pregnancies is 2 to 4% and 15 to 20%, respectively.

Data

Animal Data

The potential embryo-fetal toxicity of rolapitant was assessed in pregnant rats administered oral doses up to 22.5 mg/kg per day throughout the period of organogenesis. Rats administered doses of 13.5 or 22.5 mg/kg per day rolapitant exhibited evidence of maternal toxicity including decreased body weight gain and/or body weight loss and a concomitant decrease in food consumption during the first week of dosing. No adverse embryo-fetal developmental effects were observed at doses up to 22.5 mg/kg per day rolapitant (approximately 1.3 times the recommended intravenous human dose on a body surface area basis). In rabbits administered rolapitant throughout the period of organogenesis, oral doses up to 27 mg/kg per day (approximately 3 times the recommended intravenous human dose on a body surface area basis) were without effects on the developing fetus.

The pre- and postnatal developmental effects of rolapitant were assessed in rats administered oral doses of 2.25, 9 or 22.5 mg/kg per day during the periods of organogenesis and lactation. Maternal toxicity was evident based on mortality/moribund condition, decreased body weight and food consumption, total litter loss, prolonged parturition, decreased length of gestation, and increased number of unaccounted for implantation sites at a dose of 22.5 mg/kg per day (approximately 1.3 times the recommended intravenous human dose on a body surface area basis). Effects on offspring at this dose included decreased postnatal survival, and decreased body weights and body weight gain, and may be related to the maternal toxicity observed. At a maternal dose of 9 mg/kg per day rolapitant (approximately 0.5 times the recommended intravenous human dose on a body surface area basis), there was a decrease in memory in female pups in a maze test and a decrease in pup body weight.

8.2 Lactation

Risk Summary

There are no data on the presence of rolapitant in human milk, the effects of rolapitant in the breastfed infant, or the effects of rolapitant on milk production. Rolapitant administered orally to lactating female rats was present in milk [see [Data](#)]. The developmental and health benefits of breastfeeding should be considered along with the mother's clinical need for VARUBI and any potential adverse effects on the breastfed infant from VARUBI or from the underlying maternal condition or the use of concomitant chemotherapy.

Data

Radioactivity from labeled [¹⁴C] rolapitant was transferred into milk of lactating rats following a single oral dose of 22.5 mg/kg, and the maximum radioactivity in milk was observed at 12 hours post-dose. The mean milk/plasma radioactivity concentration ratios in dams at 1 to 48 hours post-dose ranged from 1.24 to 3.25. Based on average daily consumption of milk (2 mL/day) and the maximum milk radioactivity determined, pup exposure is expected to be 0.32% of the orally administered dose.

8.3 Females and Males of Reproductive Potential

Infertility

Females

In animal fertility studies, rolapitant impaired the fertility in females in a reversible fashion [see *Nonclinical Toxicology (13.1)*].

8.4 Pediatric Use

Safety and efficacy of VARUBI have not been established in pediatric patients.

In non-clinical studies, sexual development and fertility of juvenile rats (human age equivalent of birth to 16 years) were affected following oral administration of VARUBI, as described below in Juvenile Animal Toxicity Data.

Juvenile Animal Toxicity Data

In an oral juvenile toxicity study in rats, at rolapitant doses of 11.3, 22.5 and 45 mg/kg/day from postnatal (PND) Day 7 through PND 70 (equivalent human age of newborn to 16 years), there was a delay in the attainment of balanopreputial separation in males and an acceleration of the attainment of vaginal patency in females with rolapitant doses of 22.5 and 45 mg/kg/day (approximately 1.3 and 2.6 times, respectively, the recommended intravenous human dose on a body surface area basis). Treated males and females were mated following a 2-week wash-out period after the last dose. There were lower mean numbers of implantation sites, corpora lutea, and mean number of viable embryos at 22.5 and 45 mg/kg/day (approximately 1.3 and 2.6 times, respectively, the recommended intravenous human dose on a body surface area basis) when compared to control.

8.5 Geriatric Use

Of the 1294 subjects treated with VARUBI, 25% were 65 years and over, while 5% were 75 and over. No overall differences in safety or efficacy were reported between the elderly subjects and younger subjects, but greater sensitivity of some older individuals cannot be ruled out.

8.6 Hepatic Impairment

No dosage adjustment is needed in patients with mild (Child-Pugh Class A) or moderate (Child-Pugh Class B) hepatic impairment. There are no clinical or pharmacokinetic data in patients with severe hepatic impairment (Child-Pugh Class C). Avoid use of VARUBI in patients with severe hepatic impairment. If use cannot be avoided, monitor patients for adverse reactions related to rolapitant [see *Adverse Reactions* (6.1)].

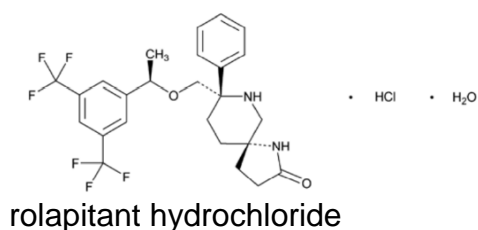
10 OVERDOSAGE

There are no data on overdose with VARUBI.

There is no antidote for VARUBI overdose. Discontinue VARUBI in the event of overdose, and institute general supportive measures and close observation.

11 DESCRIPTION

VARUBI contains rolapitant, a substance P/neurokinin 1 (NK1) receptor antagonist. Rolapitant hydrochloride is chemically described as (5S,8S)-8- { [(1R)-1-[3,5-bis(trifluoromethyl)phenyl]ethoxy]methyl}]-8-phenyl-1,7-diazaspiro[4.5]decan-2-one hydrochloride. Its empirical formula is C₂₅H₂₆F₆N₂O₂. HCl.H₂O, and its structural formula is:



Rolapitant hydrochloride is a white to off-white powder, with a molecular weight of 554.95. Solubility of rolapitant hydrochloride in aqueous solution is pH-dependent and is more soluble at lower pH. Rolapitant has good solubility in common pharmaceutical solvents such as ethanol, propylene glycol and 40% hydroxypropyl beta-cyclodextrin.

VARUBI (rolapitant) Tablets

Each tablet contains 90 mg rolapitant (equivalent to 100 mg rolapitant hydrochloride) and the following inactive ingredients: colloidal silicon dioxide, croscarmellose sodium, lactose monohydrate, magnesium stearate, microcrystalline cellulose, povidone, and pregelatinized starch. The tablets are coated in non-functional blue and clear coats. The tablet coating comprises the following inactive ingredients: FD&C Blue No. 2-Indigo Carmine Lake, polyethylene glycol, polysorbate 80, polyvinyl alcohol, talc, and titanium dioxide.

VARUBI (rolapitant) Injectable Emulsion

Each single-dose vial of 92.5 mL sterile emulsion for intravenous use contains 166.5 mg rolapitant (equivalent to 185 mg of rolapitant hydrochloride) and the following inactive ingredients: dibasic sodium phosphate, anhydrous (2.8 mg/mL), medium chain triglycerides (11 mg/mL), polyoxyl 15 hydroxystearate (44 mg/mL), sodium chloride (6.2 mg/mL), soybean oil (6.5 mg/mL), water for injection and may contain hydrochloric acid and/or sodium hydroxide to adjust pH to 7.0 to 8.0. VARUBI injectable emulsion is a sterile, translucent white liquid and has some opalescence.

12 CLINICAL PHARMACOLOGY

12.1 Mechanism of Action

Rolapitant is a selective and competitive antagonist of human substance P/NK1 receptors. Rolapitant does not have significant affinity for the NK2 or NK3 receptors or for a battery of other receptors, transporters, enzymes and ion channels. Rolapitant is also active in animal models of chemotherapy-induced emesis.

12.2 Pharmacodynamics

NK1 Receptor Occupancy

A human Positron Emission Tomography (PET) study with rolapitant demonstrated that rolapitant crosses the blood brain barrier and occupies brain NK1 receptors. A dose-dependent increase in mean NK1 receptor occupancy was observed in the oral dose range from 4.5 mg to 180 mg of rolapitant. At the 180 mg oral dose of rolapitant, the mean NK1 receptor occupancy was 73% in the striatum at 120 hours after a single dose administration in healthy subjects. The relationship between NK1 receptor occupancy and the clinical efficacy of rolapitant has not been established.

Cardiac Electrophysiology

At an oral dose of 720 mg (4 times the recommended oral dose), VARUBI does not prolong the QT interval to any clinically relevant extent. The maximum rolapitant concentration after a single 720 mg dose of oral rolapitant was 30% to 50% higher than that achieved with the recommended dose of 166.5 mg of intravenous rolapitant.

12.3 Pharmacokinetics

Absorption

Oral tablet

Following a single oral dose administration of 180 mg VARUBI tablets under fasting conditions to healthy subjects, rolapitant was measurable in plasma between 30 minutes and the peak plasma concentration (C_{max}) for rolapitant which was reached in about 4 hours and mean C_{max} was 968 ng/mL (%CV:28%).

Following multiple oral doses of 9 to 45 mg once daily of rolapitant (5% to 25% of the recommended dose) for 10 days, accumulation of rolapitant (ratio of AUC_{0-24hr}) ranged from 5.0 to 5.3 fold.

The systemic exposures (C_{max} and AUC) to rolapitant increased in a dose-proportional manner when single oral doses of rolapitant increased from 4.5 mg to 180 mg. With 4 times the recommended clinical oral dose of 180 mg, the C_{max} and AUC of rolapitant increased 3.1 fold and 3.7 fold, respectively.

Concomitant administration of a high-fat meal did not significantly affect the pharmacokinetics of rolapitant after administration of 180 mg VARUBI tablets [see *Dosage and Administration (2)*].

Injectable emulsion

Following a 30-minute infusion of a single intravenous dose of 166.5 mg VARUBI injectable emulsion to healthy subjects, the mean C_{max} at the end of the infusion (30 min) was 1986 ng/mL (%CV:39%).

Following multiple intravenous doses of 18 to 54 mg once daily of rolapitant (approximately 10% to 33% of the recommended dose) for 10 days, accumulation of rolapitant (ratio of AUC_{0-24hr}) ranged from 4.3 fold to 5.4 fold.

The systemic exposures (C_{max} and AUC) to rolapitant increased in a dose-proportional manner when single intravenous doses of rolapitant increased from 18 mg to 180 mg. The C_{max} and AUC of rolapitant increased 11.6 fold and 10.1 fold, respectively.

At the recommended dose, the absolute bioavailability of rolapitant is 91%.

Distribution

Rolapitant was highly protein bound to human plasma (99.8%). The volume of distribution (Vd) was 392 L in healthy subjects following a single intravenous dose of 166.5 mg rolapitant. The apparent volume of distribution (Vd/F) following a single oral dose of 180 mg rolapitant was 460 L in healthy subjects. The large Vd indicated an extensive tissue distribution of rolapitant. In a population pharmacokinetic analysis of oral rolapitant, the Vd/F was 387 L in cancer patients.

Elimination

Following single intravenous doses (18 to 180 mg) and single oral doses (4.5 to 180 mg) of rolapitant, the mean terminal half-life (t_{1/2}) of rolapitant ranged from 138 to 205 hours and 169 to 183 hours (approximately 7 days), respectively, and was independent of dose. In a population pharmacokinetic analysis, the apparent total clearance (CL/F) of oral rolapitant was 0.96 L/hour in cancer patients. The total clearance following intravenous administration of 166.5 mg rolapitant in healthy subjects was 1.65 L/hour.

Metabolism

Rolapitant is metabolized primarily by CYP3A4 to form a major active metabolite, M19 (C4-pyrrolidine-hydroxylated rolapitant). In a mass balance study, the metabolite M19 was the

major circulating metabolite. The formation of M19 was significantly delayed with the median T_{max} of 120 hours (range: 24-168 hours) with C_{max} of 183 ng/mL. The mean half-life of M19 was 158 hours.

The exposure ratio of M19 to rolapitant was approximately 50% in plasma.

The C_{max} and AUC of M19 following single intravenous administration of 166.5 mg of rolapitant were 149 ng/mL and 68,600 ng·h/mL, respectively. The median T_{max} was 168 hours. The mean half-life was 182 hours.

Excretion

Rolapitant is eliminated primarily through the hepatic/biliary route. Following administration of a single oral 180-mg dose of [14 C]-rolapitant, on average 14.2% (range 9% to 20%) and 73% (range 52% to 89%) of the dose was recovered in the urine and feces, respectively over 6 weeks. In pooled samples collected over 2 weeks, 8.3% of the dose was recovered in the urine primarily as metabolites and 37.8% of the dose was recovered in the feces primarily as unchanged rolapitant. Unchanged rolapitant or M19 were not found in pooled urine sample.

Specific Populations

Age, Male and Female Patients and Racial or Ethnic Groups

Population pharmacokinetic analyses indicated that age, sex and race had no significant impact on the pharmacokinetics of rolapitant.

Patients with Hepatic Impairment

Following administration of a single oral dose of 180 mg rolapitant to patients with mild hepatic impairment (Child-Pugh Class A), the pharmacokinetics of rolapitant were comparable with those of healthy subjects. In patients with moderate hepatic impairment (Child-Pugh Class B), the mean C_{max} was 25% lower while mean AUC of rolapitant was similar compared to those of healthy subjects. The median T_{max} for M19 was delayed to 204 hours in patients with mild or moderate hepatic impairment compared to 168 hours in healthy subjects. The pharmacokinetics of rolapitant were not studied in patients with severe hepatic impairment (Child-Pugh Class C) [see *Use in Specific Populations (8.6)*].

Patients with Renal Impairment

In population pharmacokinetic analyses, creatinine clearance (CL_{cr}) at baseline did not show a significant effect on rolapitant pharmacokinetics in cancer patients with mild (CL_{cr}: 60 to 90 mL/min) or moderate (CL_{cr}: 30 to 60 mL/min) renal impairment compared to cancer patients with normal kidney function. Information is insufficient for the effect of severe renal impairment. The pharmacokinetics of rolapitant was not studied in patients with end-stage renal disease requiring hemodialysis.

Drug Interaction Studies

Effect of Other Drugs on Rolapitant

Rolapitant is a substrate for CYP3A4.

CYP3A4 inducers

When 600 mg rifampin was administered once daily for 7 days before and 7 days after administration of a single oral dose of 180 mg rolapitant, the mean C_{max} of rolapitant was reduced by 30% and the mean AUC was reduced by 85% compared to administration of rolapitant alone. The mean half-life of rolapitant decreased from 176 hours without rifampin to 41 hours with concurrent rifampin [see *Drug Interactions (7.2)*].

CYP3A4 inhibitors

Concurrent administration of 400 mg ketoconazole, a strong CYP3A4 inhibitor, once daily for 21 days following a single 90 mg oral dose of rolapitant, did not affect the C_{max} of rolapitant while the AUC increased by 21%. These pharmacokinetic differences are not clinically significant.

Effect of Rolapitant on Other Drugs

The effect of VARUBI on CYP450 enzymes and transporters is summarized below.

CYP3A4 substrates

Rolapitant is neither an inhibitor nor an inducer of CYP3A4.

Midazolam: A single oral dose of 180 mg rolapitant had no significant effects on the pharmacokinetics of midazolam when oral midazolam 3 mg was co-administered on Day 1 and administered alone on Days 6 and 9. A single intravenous dose of 166.5 mg rolapitant had no significant effects on the pharmacokinetics of midazolam when oral midazolam 3 mg was co-administered on Day 1 and administered alone on Day 8.

Ondansetron: Rolapitant had no significant effects on the pharmacokinetics of intravenous ondansetron when concomitantly administered with a single 180 mg oral dose of rolapitant on the same day.

Dexamethasone: Rolapitant had no significant effects on the pharmacokinetics of dexamethasone when oral dexamethasone was administered on Days 1 to 3 after a single 180 mg oral dose of rolapitant was co-administered on Day 1 [see *Dosage and Administration (2)*].

CYP2D6 substrates

Rolapitant is a moderate inhibitor of CYP2D6 [see *Contraindications (4)*, *Warnings and Precautions (5.1)*, and *Drug Interactions (7.1)*]. See [Table 4](#) and [Table 5](#) for a summary of the effects of VARUBI on the pharmacokinetics of co-administered dextromethorphan, a CYP2D6 substrate.

Table 4: Effect of Oral Rolapitant on the Systemic Exposure of Co-administered CYP2D6 Substrate (Dextromethorphan)*

Rolapitant Dose	% Change for Dextromethorphan			
	Day 1 with rolapitant		Day 8 without rolapitant	
	Change in C _{max}	Change in AUC	Change in C _{max}	Change in AUC
180 mg	120% ↑	160% ↑	180% ↑	230% ↑

*A single oral dose of 180 mg rolapitant was administered on Day 1; the interacting drug (dextromethorphan 30 mg) was administered orally on Day 1 with rolapitant and alone on Day 8.

↑ Denotes a mean increase in exposure by the percentage indicated.

Table 5: Effect of Intravenous Rolapitant on the Systemic Exposure of Co-administered CYP2D6 Substrate (Dextromethorphan)*

Rolapitant Dose	% Change for Dextromethorphan									
	Day 1 with rolapitant		Day 8 without rolapitant		Day 15 without rolapitant		Day 22 without rolapitant		Day 29 without rolapitant	
	Change in C _{max}	Change in AUC	Change in C _{max}	Change in AUC	Change in C _{max}	Change in AUC	Change in C _{max}	Change in AUC	Change in C _{max}	Change in AUC
166.5 mg	75% ↑	110% ↑	140% ↑	220% ↑	170% ↑	220% ↑	120% ↑	180% ↑	96% ↑	130% ↑

*A single intravenous dose of 166.5 mg rolapitant was administered on Day 1; the interacting drug (dextromethorphan 30 mg) was administered orally on Day 1 with rolapitant and alone on Days 8, 15, 22, and 29.

↑ Denotes a mean increase in exposure by the percentage indicated.

BCRP transporter

In vitro, rolapitant is a BCRP transporter inhibitor.

When sulfasalazine (BCRP substrate) was administered with a single intravenous dose of 166.5 mg rolapitant on Day 1 and without rolapitant on Day 11, no effect on C_{max} and AUC of sulfasalazine 500 mg was observed on Day 1, an 18% decrease in C_{max} and an 11% decrease in AUC were observed on Day 11. These differences in systemic exposures are not clinically significant.

When sulfasalazine was administered with a single oral dose of 180 mg rolapitant on Day 1 and without rolapitant on Day 8, a 140% increase in C_{max} and a 130% increase in AUC of sulfasalazine 500 mg was observed on Day 1, a 17% increase in C_{max} and a 32% increase in AUC was observed on Day 8 [see *Drug Interactions* (7.3)].

P-glycoprotein substrates

In vitro, rolapitant is a P-gp inhibitor.

When digoxin (P-gp substrate) was administered with a single oral dose of 180 mg rolapitant, a 70% increase in C_{max} and a 30% increase in AUC of digoxin 0.5 mg were observed [see *Drug Interactions (7.4)*].

When digoxin was administered with a single intravenous dose of 166.5 mg rolapitant, no effect on AUC and a 21% increase in the C_{max} of digoxin 0.5 mg was observed [see *Drug Interactions (7.4)*].

Warfarin

When warfarin was administered with a single intravenous dose of 166.5 mg rolapitant, 3% and 18% increases in C_{max} and AUC of S-warfarin were observed on Day 1, respectively. On Day 8, the increases were 3% for C_{max} and 21% for AUC. The effect on INR or prothrombin time was not measured [see *Drug Interactions (7.5)*].

Substrates for other CYP enzymes

In vitro studies suggest that rolapitant is not an inhibitor of CYP1A2 and CYP2E1. *In vitro* studies suggest that rolapitant inhibits CYP2A6; however, a clinically meaningful drug interaction via an inhibition of CYP2A6 appears unlikely.

No clinically significant interaction was seen on the systemic exposures of the following drugs when administered with a single intravenous dose of 166.5 mg rolapitant on Day 1 and without rolapitant on Day 8: caffeine (CYP1A2 substrate; no effect on caffeine 200 mg on Days 1 and 8), and omeprazole (CYP2C19 substrate; 14% increase in C_{max} and no effect on AUC of omeprazole 40 mg on Day 1; on Day 8: 15% increase in C_{max} and no effect on AUC).

No clinically significant interaction was seen on the systemic exposures of the following drugs when administered with a single oral dose of 180 mg rolapitant on Day 1: repaglinide (CYP2C8 substrate; no effect on repaglinide 0.25 mg on Day 1; on Day 8: 29% and 24% increase in C_{max} and AUC, respectively), efavirenz (CYP2B6 substrate; 18% decrease in C_{max} and no effect on AUC of efavirenz 600 mg on Day 1; on Day 8: no effect on C_{max} and 28% increase in AUC), tolbutamide (CYP2C9 substrate; no effect on tolbutamide 500 mg on Day 1 and on Day 8), or omeprazole (CYP2C19 substrate; 44% increase in C_{max} and 23% increase in AUC of omeprazole 40 mg on Day 1; on Day 8: 37% and 15% increase in C_{max} and AUC, respectively).

Substrates for other transporters

In vitro studies suggest that oral rolapitant is unlikely to inhibit organic anion transporting polypeptides 1B1 and 1B3 (OATP1B1 and OATP1B3), organic anion transporters 1 and 3 (OAT1 and OAT3), organic cation transporter 2 (OCT2), and multidrug and toxin extrusion proteins 1 and 2K (MATE1 and MATE2K) *in vivo*.

In vitro studies suggest that intravenous rolapitant is unlikely to inhibit OATP1B3, OAT1, OAT3, OCT2, and MATE2K *in vivo*. However, the potential for intravenous rolapitant to inhibit OATP1B1 or MATE1 *in vivo* cannot be ruled out.

13 NONCLINICAL TOXICOLOGY

13.1 Carcinogenesis, Mutagenesis, Impairment of Fertility

Carcinogenesis

The carcinogenic potential of rolapitant was assessed in 2-year carcinogenicity studies in CD-1 mice and Sprague-Dawley rats. In mice, there were no drug-related neoplastic findings at doses up to 135 mg/kg per day (approximately 3.9 times the recommended intravenous human dose on a body surface area basis). In rats, there were no drug-related neoplastic findings at doses up to 90 mg/kg per day (approximately 5.2 times the recommended intravenous human dose on a body surface area basis).

Mutagenesis

Rolapitant was not genotoxic in an Ames test, a human peripheral blood lymphocyte chromosome aberration test, and a mouse micronucleus test.

Impairment of Fertility

In a fertility and early embryonic development study in female rats, rolapitant at an oral dose of 9 mg/kg per day (approximately 0.5 times the recommended intravenous human dose on a body surface area basis) caused a transient decrease in maternal body weight gain and increases in the incidence of pre- and post-implantation loss. At a rolapitant dose of 4.5 mg/kg per day (approximately 0.3 times the recommended intravenous human dose on a body surface area basis), there were slight decreases in the number of corpora lutea and implantation sites. Rolapitant did not affect the fertility or general reproductive performance of male rats at doses up to 90 mg/kg per day (approximately 5.2 times the recommended intravenous human dose on a body surface area basis). Reversibility in female rats was demonstrated in a follow-up study.

14 CLINICAL STUDIES

Cisplatin-Based Highly Emetogenic Chemotherapy (HEC)

In two multicenter, randomized, double-blind, parallel group, controlled clinical studies (Study 1 and Study 2), the VARUBI regimen (VARUBI tablets, granisetron and dexamethasone) was compared with control therapy (placebo, granisetron and dexamethasone) in patients receiving a chemotherapy regimen that included cisplatin >60 mg/m². See [Table 6](#) for the treatment regimens.

Table 6: Treatment Regimens in Studies 1 and 2		
	Day 1	Day 2 to 4
VARUBI Regimen		
Oral VARUBI [†]	180 mg	None
Oral Dexamethasone	20 mg [‡]	8 mg twice daily

Table 6: Treatment Regimens in Studies 1 and 2		
	Day 1	Day 2 to 4
Intravenous Granisetron	10 mcg/kg [§]	None
Control Regimen*		
Oral Dexamethasone	20 mg [‡]	8 mg twice daily
Intravenous Granisetron	10 mcg/kg [§]	None

* VARUBI placebo was used to maintain blinding.

† VARUBI was administered 1 to 2 hours prior to chemotherapy treatment on Day 1.

‡ Dexamethasone was administered 30 minutes prior to chemotherapy on Day 1. There is no drug interaction between VARUBI and dexamethasone, so no dosage adjustment for dexamethasone is required [see *Clinical Pharmacology* (12.3)].

§ The dose of granisetron was administered 30 minutes prior to chemotherapy on Day 1.

Study 1

A total of 532 patients were randomized to either the VARUBI regimen (N=266) or control therapy (N=266). A total of 526 patients were included in the evaluation of efficacy. Of those randomized 42% were women, 58% men, 67% White, 23% Asian, 1% Black, and 9% multi-racial/other/unknown. The proportion of patients from North America was 16%. Patients in this clinical study ranged from 20 to 90 years of age, with a mean age of 57 years. In Study 1, 26% of patients were 65 years or older, with 3% of patients being 75 years or older. The mean cisplatin dose was 77 mg/m².

During this study, 82% of the patients received a concomitant chemotherapeutic agent in addition to protocol-mandated cisplatin. The most common concomitant chemotherapeutic agents administered during Cycle 1 were: gemcitabine (17%), paclitaxel (12%), fluorouracil (11%), etoposide (10%), vinorelbine (9%), docetaxel (9%), pemetrexed (7%), doxorubicin (6%) and cyclophosphamide (5%).

Study 2

A total of 555 patients were randomized to either the VARUBI regimen (N=278) or control therapy (N=277). A total of 544 patients were included in the evaluation of efficacy. Of those randomized 32% were women, 68% men, 81% White, 14% Asian, 1% Black, and 5% multi-racial/other/unknown. The proportion of patients from North America was 7%. Patients in this clinical study ranged from 18 to 83 years of age, with a mean age of 58 years. In this study, 27% of patients were 65 years or older, with 3% of patients being 75 years or older. The mean cisplatin dose was 76 mg/m².

During this study, 85% of the patients received a concomitant chemotherapeutic agent in addition to protocol-mandated cisplatin. The most common concomitant chemotherapeutic agents administered during Cycle 1 were: vinorelbine (16%), gemcitabine (15%), fluorouracil (12%), etoposide (11%), pemetrexed (9%), docetaxel (7%), paclitaxel (7%), epirubicin (5%) and capecitabine (4%).

The primary endpoint in both studies was complete response (defined as no emetic episodes and no rescue medication) in the delayed phase (25 to 120 hours) of chemotherapy-induced nausea and vomiting.

Moderately Emetogenic Chemotherapy (MEC) and Combinations of Anthracycline and Cyclophosphamide Chemotherapy

Study 3

In Study 3, a multicenter, randomized, double-blind, parallel group, controlled clinical study in moderately emetogenic chemotherapy, the VARUBI regimen (VARUBI tablets, granisetron and dexamethasone) was compared with control therapy (placebo, granisetron and dexamethasone) in patients receiving a moderately emetogenic chemotherapy regimen that included at least 50% of patients receiving a combination of anthracycline and cyclophosphamide. The percentage of patients who received carboplatin in Cycle 1 was 30%. Treatment regimens for the VARUBI and control arms are summarized in [Table 7](#).

Table 7: Treatment Regimens in Study 3		
	Day 1	Day 2 to 3
VARUBI Regimen		
Oral VARUBI [†]	180 mg	none
Oral Dexamethasone	20 mg [‡]	none
Oral Granisetron	2 mg [§]	2 mg once daily
Control Regimen*		
Oral Dexamethasone	20 mg [‡]	none
Oral Granisetron	2 mg [§]	2 mg once daily

* VARUBI placebo was used to maintain blinding.

[†] VARUBI was administered 1 to 2 hours prior to chemotherapy treatment on Day 1.

[‡] Dexamethasone was administered 30 minutes prior to chemotherapy on Day 1. There is no drug interaction between VARUBI and dexamethasone, so no dosage adjustment for dexamethasone is required [see *Clinical Pharmacology (12.3)*].

[§] The dose of granisetron was administered 30 minutes prior to chemotherapy on Day 1.

A total of 1369 patients were randomized to either the VARUBI regimen (N=684) or control therapy (N=685). A total of 1332 patients were included in the evaluation of efficacy. Of those randomized 80% were women, 20% men, 77% White, 13% Asian, 4% Black, and 6% multi-racial/other/unknown. The proportion of patients from North America was 33%. Patients in this clinical study ranged from 22 to 88 years of age, with a mean age of 57 years. In this study, 28% of patients were 65 years or older, with 7% of patients being 75 years or older.

The primary endpoint was complete response (defined as no emetic episodes and no rescue medication) in the delayed phase (25 to 120 hours) of chemotherapy-induced nausea and vomiting.

A summary of the study results from HEC Studies 1 and 2 and for the MEC Study 3 is shown in [Table 8](#).

Table 8: Percent of Patients Receiving Emetogenic Chemotherapy Responding by Treatment Group for the HEC Studies 1 and 2 and for the MEC Study 3

Endpoint	HEC Study 1			HEC Study 2			MEC Study 3		
	VARUBI† (N=264) Rate (%)	Control† (N=262) Rate (%)	P-Value Treatment Difference (95% C.I.)	VARUBI† (N=271) Rate (%)	Control† (N=273) Rate (%)	P-Value Treatment Difference (95% C.I.)	VARUBI† (N=666) Rate (%)	Control† (N=666) Rate (%)	P-Value Treatment Difference (95% C.I.)
Primary Endpoint: Complete Response in the Delayed Phase	72.7	58.4	<0.001* 14.3 (6.3, 22.4)	70.1	61.9	0.043* 8.2 (0.3, 16.1)	71.3	61.6	<0.001* 9.8 (4.7, 14.8)

† Granisetron and dexamethasone were used as concomitant drugs.

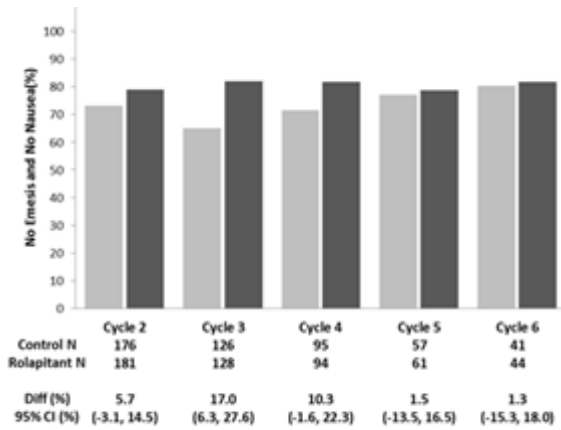
* Results were obtained based on the Cochran-Mantel-Haenszel test stratified by gender.

Multiple-Cycle Extension: In Studies 1, 2, and 3, patients had the option of continuing into a multiple-cycle extension for up to 5 additional cycles of chemotherapy receiving the same treatment as assigned in cycle 1. At Day 6 to 8 following initiation of chemotherapy, patients were asked to recall whether they had any episode of vomiting or retching or nausea that interfered with normal daily life. The results are summarized by study and treatment group in [Figure 1](#) below.

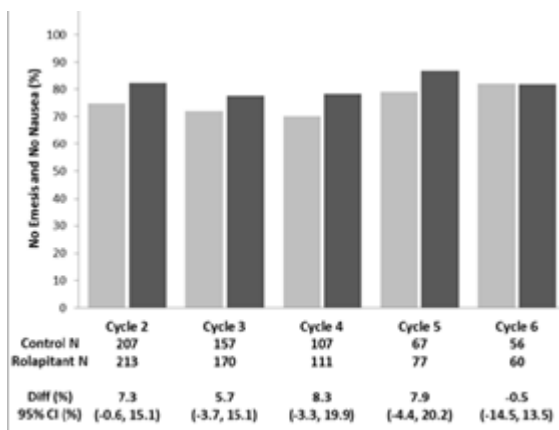
Figure 1: No Emesis and No Nausea Interfering with Daily Life over Cycles 2-6

■ Control ■ Rolapitant

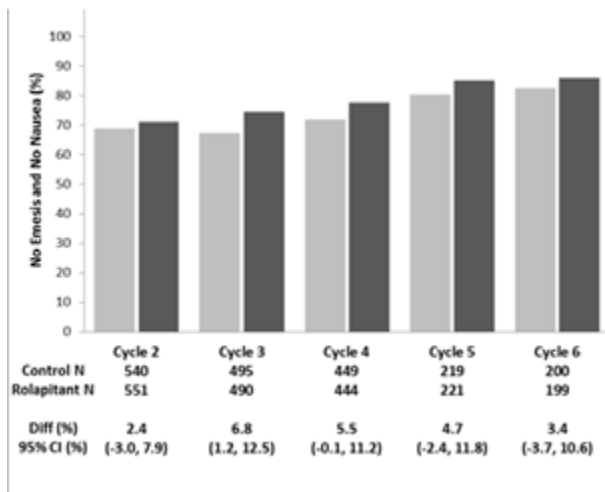
Study 1



Study 2



Study 3



16 HOW SUPPLIED/STORAGE AND HANDLING

VARUBI Tablets

VARUBI tablets are available as film-coated, capsule shaped, blue tablets, debossed with T0101 on one side and 100 on the other side. Each tablet contains 90 mg rolapitant. VARUBI tablets are packaged in an Aclar blister shell with aluminum foil backing and supplied as follows:

NDC 69656-101-02

A single dose package (2 tablets as one set of twinned blisters)

Store at 20°C - 25°C (68°F - 77°F); excursions permitted to 15°C - 30°C (59°F - 86°F) [see USP Controlled Room Temperature].

VARUBI Injectable Emulsion

VARUBI injectable emulsion is supplied as a sterile, translucent white homogeneous liquid that has some opalescence. Each stoppered vial delivers 166.5 mg/92.5 mL (1.8 mg/mL) rolapitant:

NDC 69656-102-10

One single-dose vial

Store at 20°C - 25°C (68°F - 77°F); excursions permitted to 15°C - 30°C (59°F - 86°F) [see USP Controlled Room Temperature].

17 PATIENT COUNSELING INFORMATION

Advise the patient to read the FDA-approved patient labeling (Patient Information).

Drug Interactions

Advise patients to tell their healthcare provider when they start or stop taking any concomitant medications. VARUBI is a moderate CYP2D6 inhibitor and can increase plasma concentrations of CYP2D6 substrates [see *Contraindications (4)*, *Warnings and Precautions (5.1)*, *Drug Interactions (7.1)*].

Infertility

Advise females of reproductive potential that VARUBI may impair fertility [see *Use in Specific Populations (8.3)*, *Nonclinical Toxicology (13.1)*].

Manufactured for: TESARO, Inc. 1000 Winter St., Waltham, MA 02451

118572

PATIENT INFORMATION

**VARUBI® (vuh ROO bee)
(rolapitant)
tablets, for oral use**

**VARUBI® (vuh ROO bee)
(rolapitant)
injectable emulsion, for intravenous use**

What is VARUBI?

VARUBI is a prescription medicine called an “antiemetic.” VARUBI is used with other medicines in adults to help prevent nausea and vomiting that happens later with certain anti-cancer medicines (chemotherapy).

It is not known if VARUBI is safe and effective in children.

Do not take VARUBI if you take thioridazine or pimozide. Taking VARUBI with thioridazine or pimozide can cause serious or life-threatening heart rhythm changes.

Before taking VARUBI, tell your doctor about all of your medical conditions, including if you:

- have liver problems.
- are pregnant or plan to become pregnant. It is not known if VARUBI will harm your unborn baby.
- are breastfeeding or plan to breastfeed. It is not known if VARUBI passes into your breast milk or could harm your baby.

Tell your doctor about all the medicines you take or stop taking, including prescription and over-the-counter medicines, vitamins, and herbal supplements. Keep a list of your medicines to show your doctor and pharmacist when you get a new medicine.

VARUBI and other medicines may affect each other and could cause serious side effects.

How should I take VARUBI?

- Take VARUBI exactly as your doctor tells you to take it.
- There are 2 ways your doctor may prescribe VARUBI for you:
 - 1. VARUBI tablets:**
 - VARUBI tablets are taken on Day 1 of chemotherapy. Take 2 VARUBI tablets by mouth within 2 hours before you receive your anti-cancer medicine (chemotherapy).
 - VARUBI tablets can be taken with or without food.
 - Do not take VARUBI more than 1 time every 14 days.
 - If you take too much VARUBI, call your doctor or go to the nearest hospital emergency room right away.
 - 2. VARUBI injectable emulsion:**
 - VARUBI injectable emulsion is given on Day 1 of chemotherapy. It will be given to you in your vein (intravenously) over 30 minutes, within 2 hours before you receive your anti-cancer medicine (chemotherapy).

What are the possible side effects of VARUBI?

VARUBI may cause serious side effects, including:

Change in the level of some medicines in your blood. Serious or life-threatening reactions, including heart rhythm changes, may occur if VARUBI is used with certain other medicines. You should not take VARUBI if you take pimozide.

The most common side effects of VARUBI in people who take VARUBI and receive Cisplatin chemotherapy medicine include: low white blood cell count, hiccups, and stomach (abdominal) pain.

The most common side effects of VARUBI in people who take VARUBI and receive Anthracycline and Cyclophosphamide chemotherapy medicines include: decreased appetite, low white blood cell count, dizziness, indigestion, urinary tract infection, mouth sores, and low red blood cell count.

These are not all the possible side effects of VARUBI. Call your doctor for medical advice about side effects. You may report side effects to FDA at 1-800-FDA-1088.

How should I store VARUBI?

Store VARUBI at room temperature between 68°F to 77°F (20°C to 25°C).

Keep VARUBI and all medicines out of the reach of children.

General Information about the safe and effective use of VARUBI

Medicines are sometimes prescribed for purposes other than those listed in a Patient Information leaflet. Do not use VARUBI for a condition for which it was not prescribed. Do not give VARUBI to other people, even if they have the same symptoms that you have. It may harm them. You can ask your doctor or pharmacist for information about VARUBI that is written for health professionals.

What are the ingredients in VARUBI?

Active ingredient: rolapitant

Inactive ingredients (tablet): colloidal silicon dioxide, croscarmellose sodium, lactose monohydrate, magnesium stearate, microcrystalline cellulose, povidone, and pregelatinized starch. The tablets are coated in non-functional blue

and clear coats. The tablet coating comprises the following inactive ingredients: FD&C Blue No. 2-Indigo Carmine Lake, polyethylene glycol, polysorbate 80, polyvinyl alcohol, talc, and titanium dioxide.

Inactive ingredients (injectable emulsion): dibasic sodium phosphate, anhydrous (2.8 mg/mL), medium chain triglycerides (11 mg/mL), polyoxyl 15 hydroxystearate (44 mg/mL), sodium chloride (6.2 mg/mL), soybean oil (6.5 mg/mL), water for injection and may contain hydrochloric acid and/or sodium hydroxide to adjust pH to 7.0 to 8.0.

Manufactured for: TESARO, Inc. 1000 Winter St., Waltham, MA 02451 For more information, go to www.tesarobio.com or call 1-844-483-7276.

This Patient Information has been approved by the U.S. Food and Drug Administration

Revised: October 2017